

Date: March 27, 2020

## Subject: New Models - D80N and #13N

Dexter is pleased to announce the addition of axle models to the existing 8,000 lbs. product line; D80N sprung and #13N Torflex®.

Due to customer demand for a narrow 14" axle overhang, Dexter has developed an 8,000 lbs. solution. The narrow overhang allows for wider main rail spacing, increasing the amount of deck space between the wheel wells. Inferior solutions have entered the market while Dexter's engineering experience and manufacturing capability have created a bona fide solution for both sprung and Torflex® axles with an 8,000 lbs. rating. "



D80N sprung and #13N Torflex meet the need for narrow overhang applications, while wider overhangs remain available with the Dexter D80 sprung and #13 Torflex axles. (See overhang chart below)

Axle Model	Minimum Overhang	Maximum Overhang
D80N	14.00"	15.95"
D80*	16.00"	19.00"
#13N	14.15"	16.95"
#13	17.00"	43.00"

\* Note: Additional overhang can be achieved with upgraded tube wall thickness.



# PRODUCT BULLETIN #417

Many of the same options can be found from the existing D80 and #13. The table below identifies the features associated with the new axle models.

ATTRIBUTE	DESCRIPTION	NOTES
Tube Size	3.5" O.D. - D80N	Same as existing D80
	3.88" Square - #13N	Same as existing #13
Spindle Types	Straight Spindle with E-Z Lube® Only - D80N	Only available with flanged spindles with E-Z Lube.
Lubrication	E-Z Lube or Oil	Drum will come with poly carbonate thread-in cap if equipped with oil lube.
Hub-Drums (no idler available)	8 on 6.5" wheel bolt pattern, with 4.75" hub pilot	008-393-03 - H-D 865 9/16" Oil
		008-393-04 - H-D 865 9/16" Grease
		008-393-05 - H-D 865 5/8" Oil
		008-393-06 - H-D 865 5/8" Grease
Wheel Studs	9/16"-18 or 5/8"-18	007-223-00 - 9/16" zinc wheel stud
		007-224-00 - 5/8" phosphate wheel stud
Bearing/Race	25580/25520 inner & 02475/02420 outer	Same as existing D80 and #13
Brake Options	12-1/4" x 2-1/2" (Forward Self Adjust only)	023-622-00 LH / 023-623-00 RH
Overhang Options	14.0" to 15.95" - D80N	Overhang exceeding maximum should move to standard D80 or #13 products.
	14.15" to 16.95" - #13N	
Spring Options - D80N*	25" Slipper	072-051-01 - 25S 4K - 9/16 nylon bushing
	29" Slipper	072-051-02 - 25S 4K - 5/8 rubber bushing
Start Angles - #13N	22.5UP, 10UP, Zero, 10DN, 22.5DN, 32DN, 45DN	Same options available for the #13
Bracket Options	Low Profile or High Profile; Standard or Reverse orientation	Side mount hangers are an option
Pre-wire	Can be configured pre-wire	Both D80N and #13N offer pre-wire as an option

\*Additional spring options are available.

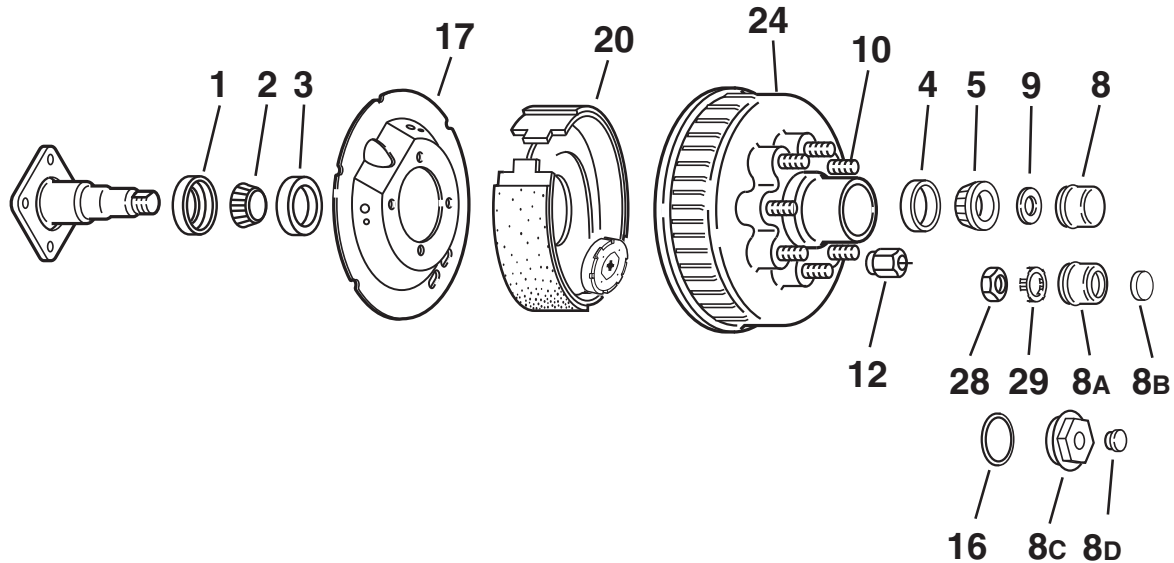
Servicing product in the field will require utilizing the service parts listed below. Dexter does not allow mixing 12-1/4" service parts from either D72 or #12V. Bearings and leaf springs are compatible between both D80N/D80 and #13N/#13. Service Parts specifically for the D80N and #13N: Please use Dexter's Light Duty Catalog (LIT-122-00) to identify additional kits and components needed (see attached).

Part Number	Description
K23-622-00	LH Brake Assembly
K23-623-00	RH Brake Assembly
K71-981-00	LH Shoe and Lining Kit
K71-982-00	RH Shoe and Lining Kit
K71-980-00	Magnet Kit

Please contact your Dexter account manager for additional information and further assistance.

Mark Nave  
Market Manager

## 865 Hub Group - For D80N/ #13N Axles



### Grease Lube Parts

Item	Part No.	Description
1	010-036-00	Seal
2	031-030-02	25580 Inner Bearing Cone
3	031-030-01	25520 Inner Bearing Cup
4	031-028-01	02420 Outer Bearing Cup
5	031-028-02	02475 Outer Bearing Cone
8	021-039-00	Grease Cap
8A	021-043-01	Grease Cap for E-Z Lube®
8B	085-001-00	E-Z Lube® Rubber Plug
9	005-057-00	Spindle Washer
28	006-191-00	Special Jam Nut for E-Z Lube®
29	006-190-00	Spindle Nut Retainer for E-Z Lube®

### Oil Lube Parts

Item	Part No.	Description
1	010-063-00	Seal (Unitized)
2	031-030-02	25580 Inner Bearing cone
3	031-030-01	25520 Inner Bearing Cup
4	031-028-01	02420 Outer Bearing Cup
5	031-028-02	02475 Outer Bearing Cone
9	005-057-00	Spindle Washer
8C	021-035-00	Oil Cap
8D	046-032-00	Oil Cap Plug
ns	046-052-00	Oil Filler Plug (service part only)
16	010-045-00	'O' Ring for Oil Lube

### Studs & Wheel Nuts

Item	Part No.	Description
10	007-224-00	5/8-18 Press-in Stud
10	007-223-00	9/16-18 Press-in Stud
12	006-053-00	9/16-18 60° Cone Nut
12	006-109-00	5/8-18 90° Cone Nut
ns	006-058-00	5/8-18 Flange Nut

Note: Spindle is not available for resale.

### Hubs

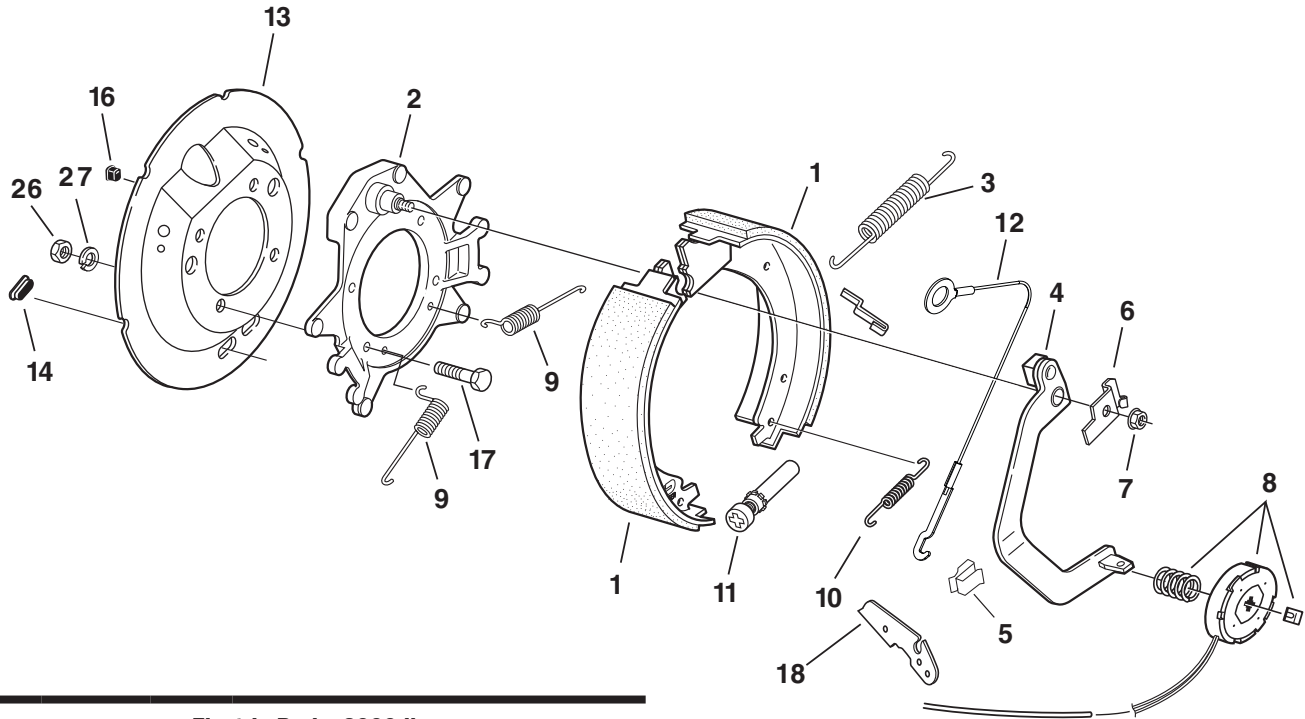
Item	Part No.	Description	Bolt Circle
24	008-393-04	Grease 9/16" Stud	8 on 6.50
24	008-393-06	Grease 5/8" Stud	8 on 6.50
24	008-393-03	Oil 9/16" Stud	8 on 6.50
24	008-393-05	Oil 5/8" Stud	8 on 6.50

### Brakes

Item	Part No.	Description
17	036-118-20	Dust Shield not included with brake assembly
20	K23-622-00	RH 12-1/4" x 2-1/2" Electric Brakes
20	K23-623-00	LH 12-1/4" x 2-1/2" Electric Brakes

**Note: 12-1/4" x 2-1/2" Brake Size**

## 12-1/4" x 2-1/2" 8,000 lbs. Electric Brake FSA



### Electric Brake 8000 lbs.

Item	Part No.	Qty/Brk	Description
0	K23-622-00	1	LH Complete Brake Assembly (shown)
0	K23-623-00	1	RH Complete Brake Assembly
1	K71-981-00	1	LH Shoe & Lining Kit Contains: 1 040-348-01 LH Primary Shoe & Lining 1 040-476-02 LH Secondary Shoe & Lining
1	K71-982-00	1	RH Shoe & Lining Kit Contains: 1 040-349-01 RH Primary Shoe & Lining 1 040-477-02 RH Secondary Shoe & Lining
2	036-119-02	1	Backing Plate
3	046-119-00	1	Shoe Return (gray)
4	047-240-40	1	LH Actuating Lever Arm Assembly
4	047-240-41	1	RH Actuating Lever Arm Assembly
5	027-039-00	3	Wire Clip
6	071-455-01	1	LH Lever Arm Retainer
6	071-455-02	1	RH Lever Arm Retainer
7	006-092-01	1	Flange Nut
8	K71-980-00	1	Magnet Kit Contains: 1 042-150-00 Magnet (red/white wire) 1 027-009-00 Magnet Retainer 1 046-175-00 Magnet Spring
9	046-136-00	2	Centering Spring
10	046-137-00	1	Adjuster Spring (yellow)
11	048-019-00	1	LH Adjuster Assembly (silver)
11	048-020-00	1	RH Adjuster Assembly (gold)
12	071-462-00	1	Cable
18	071-464-00	1	LH Adjuster Lever
18	071-463-00	1	RH Adjuster Lever
*13	036-118-20	1	Dust Shield (sold separately)
*14	046-007-00	2	Adjuster Slot Plug
*16	046-016-00	1	Magnet Wire Grommet
*17	007-251-00	4	Brake Mounting Bolt
*26	006-129-00	4	Hex Nut
*27	005-058-00	4	Lock Washer

\* Not included with complete brake assembly. Item sold separately.