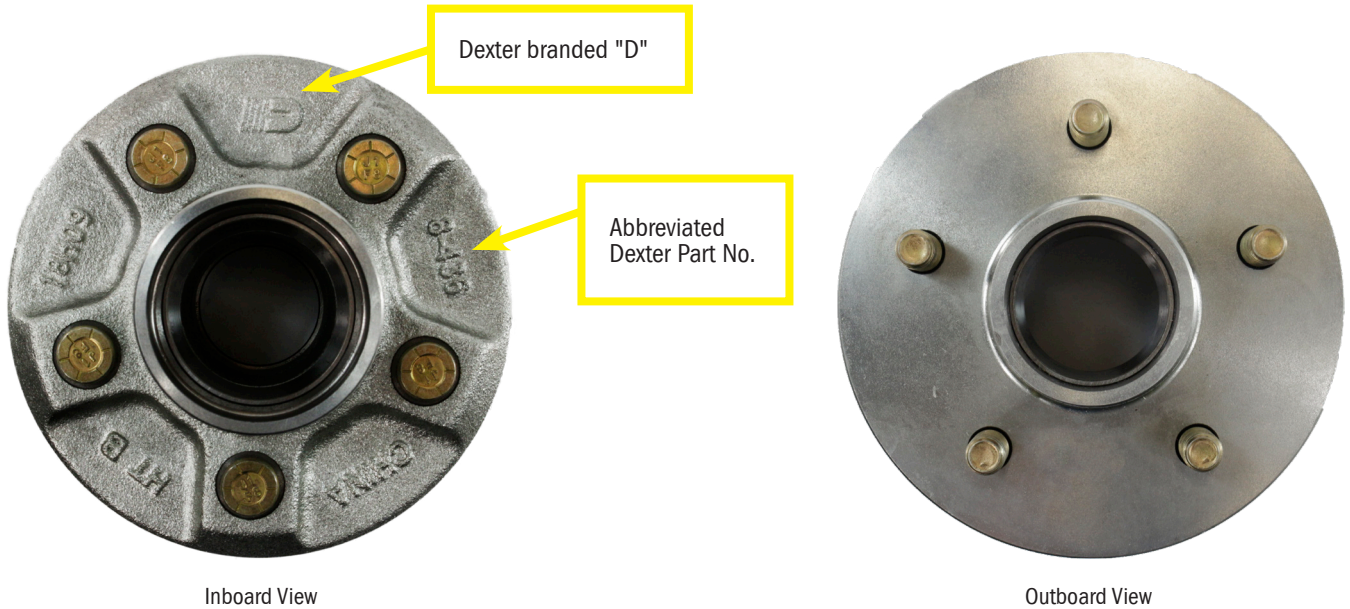


Date: March 20, 2020

Subject: 3.7K Idler Hub - Grease - E-Z Lube® - Vault®

Dexter is pleased to announce that Dexter's GAL-DEX® coating is now standard on 3.5K-3.7K idler axles produced from our Atlanta, GA, Winchester, TN, and San Marcos, CA facilities. GAL-DEX is Dexter's proprietary zinc based coating that **surpasses 500 hours of salt spray testing** per the ASTM B117 standard and is replacing the GalvXL coating.

PHOTOS OF 008-436-XX SERIES GAL-DEX HUBS

Inboard View

Outboard View



Sample of GAL-DEX Hub after 500 Hours of Salt Spray

Light & dark spots represent the healing characteristics of the zinc & top coatings. At 500 salt spray hours, the results showed minimal black or white residues; and no red rust.

Dexter's 008-248-50 GAL-DEX five spoke hub is being upgraded to this new design with the new zinc based coating and will also convert to a round hub face. The black 008-248 series five spoke hub will not change; only the GAL-DEX version.

Hubs are available in the following lubrication options: Grease, E-Z Lube, Trailer Buddy®, and Vault. The Vortex® option will be available in the future; the GalvXL option for the Vortex will still be in production until the GAL-DEX version is available.

Compatible with 3.5K & 3.7K Dexter axles. The GAL-DEX hub is designed to be used with industry standard components, including bearings and seals. Please see notes on page 2.

New GAL-DEX coating improves reliability and durability, which has been validated through extensive engineering analysis and testing in Dexter's engineering lab.

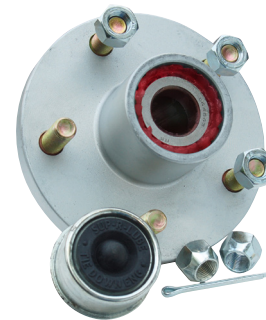
LEGACY TIE DOWN ENGINEERING (TDE) IDLER HUBS

LEGACY TDE NO.	OLD DESCRIPTION	NEW DEXTER PART NO.	NEW DESCRIPTION
46210P	Hub, Idler, 3.5K, Painted	008-436-06	Hub, 3.5K-3.7K, Black, Round Hub Face
46210EC	Hub, Idler, 3.5K, E-Coat	008-436-06	Hub, 3.5K-3.7K, Black, Round Hub Face
46210X	Hub, Idler, 3.5K, GalvXL	008-436-04	Hub, 3.5K-3.7K, GAL-DEX, Round Hub Face

*NOTE: Black hubs will be offered in retail service kits only. GAL-DEX hubs will be standard on axles and available in service kits.



Legacy TDE Black Hub



Legacy TDE GalvXL Hub

LEGACY DEXTER FIVE SPOKE HUBS – GAL-DEX VERSION ONLY

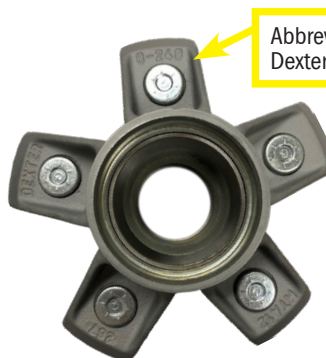
Please note that there is a difference in hub face offset. The new GAL-DEX round hub is inset compared to the legacy Dexter five spoke hub. In a service replacement situation, verify that there is enough clearance between the tire and the frame/fender. If there is not enough clearance, the black version of the Dexter 5 spoke hub should be used. In the event that a new axle is required, the hub face dimension will remain the same as the axle being replaced; therefore, the new GAL-DEX hub will have the same clearance as the old axle.

OLD DEXTER PART NO.	OLD DESCRIPTION	NEW DEXTER PART NO.	NEW DESCRIPTION
008-248-50	Hub, 3.5K, GAL-DEX, 5-Spoke Hub Face	008-436-04	Hub, 3.5K-3.7K, GAL-DEX, Round Hub Face
008-248-50	Hub, 3.5K, GAL-DEX, 5-Spoke Hub Face	008-248-05	Hub, 3.5K, Black, 5-Spoke Hub Face

*NOTE: Verify wheel & tire spacing with fender and frame to ensure no interference issues.
Offset difference between the 5-spoke hub and round hub is 3/16" per hub, 3/8" per axle.



Legacy GAL-DEX Hub 008-248-50
(DISCONTINUED)



Reverse Side Markings for Both
008-248-05 & 008-248-50

Abbreviated
Dexter Part No.



Black Hub 008-248-05
(CURRENT)



PRODUCT BULLETIN #416

LEGACY UFP HUBS

LEGACY UFP PART NO.	OLD DESCRIPTION	NEW DEXTER PART NO.	NEW DESCRIPTION
008-436-05	Hub, Idler, 3.5K-3.7K, GAL-DEX, Short Stud	008-436-05	Hub, Idler, 3.5K-3.7K, GAL-DEX, Short Stud
008-436-09	Hub, Idler, 3.5K-3.7K, GAL-DEX, Long Stud	008-436-04	Hub, Idler, 3.5K-3.7K, GAL-DEX, Long Stud

Please contact your Dexter account manager for additional information and further assistance.

Jay Klinkerman
Market Manager