

Date: September 6, 2010

Subject: Release of the 7,000 Lb. 8 Bolt Disc Brake

Dexter Axle is pleased to announce the release of our 7,000 lb. disc brake. Effective August 16, disc brakes became available for shipment, fully assembled on Dexter axles.

Features of the D70 Disc Brake Include:

- Available on sprung axle model D70
- Available on Torflex® axle model #12
- Available for straight and drop spindles
- Vented rotor
- Fixed 4-piston caliper design
- Semi-metallic lining compound
- Integral hub-rotor with 8 on 6.50" bolt circle
- Fits 16" and 16.5" stud piloted wheels (see page 3)
- Also fits 17.5" hub piloted wheels (see page 3)
- CSA approved at 7000# / 14.0 SLR
- 2 Year Limited Warranty

Please contact your Dexter Sales Engineer with additional questions or if you need further assistance.



Rick Kapsa
Product Manager

Specifications – 7,000 Lb.

Brake/Axle Capacity	7,000 lb. Torflex® or sprung suspension E-Z Lube™, standard grease, or oil lubrication
Rotor	Black, vented, and cast iron
Caliper	Ductile iron, fixed 4-piston caliper system, 1 $\frac{7}{8}$ " stainless pistons
Caliper Attaching Bracket	Ductile iron, 5 bolt flange mounting pattern
Hub Group	8 studs on a 6.50" circle 9 $\frac{1}{16}$ "-18 studs, 1.29" stick-out length from rotor face 5 $\frac{5}{8}$ "-18 studs, 1.8" stick-out length from rotor face 1 $\frac{1}{2}$ "-20 studs, 1.11" stick-out length from rotor face
Wheels	Fits 16", 16.5", and 17.5" wheels (see page 3)
Brake Pads	Semi metallic lining compound
Plumbing	Caliper connection requires an inverted flare end and a tube nut with a 3 $\frac{3}{8}$ "-24 UNF thread
Displacement (per axle)	0.90 cu-in
Brake Fluid	DOT 3 or 4

Axle Overhang Requirements

Sprung Axle	Straight axle – 8.00" to 9.00" overhang per side 4" drop axle – 8.00" to 9.00" overhang per side Overhang = rotor face to spring center
Torflex® Axle	#12 Torflex® (short spindle) – 7.00" to 15.20" overhang per side #12 Torflex® (standard spindle) – 7.47" to 15.20" overhang per side Overhang = rotor face to outside of bracket

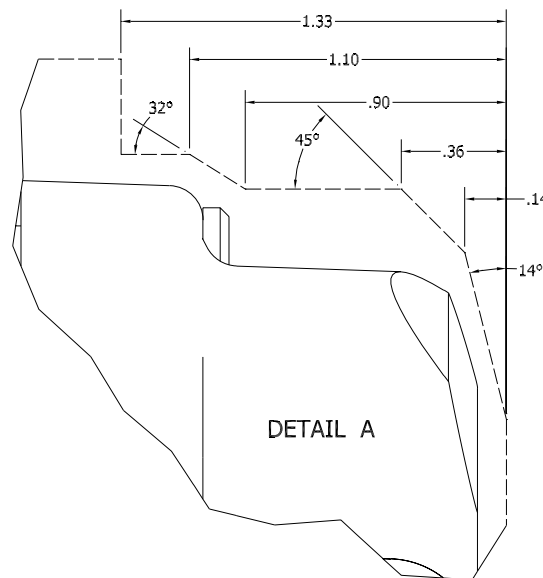
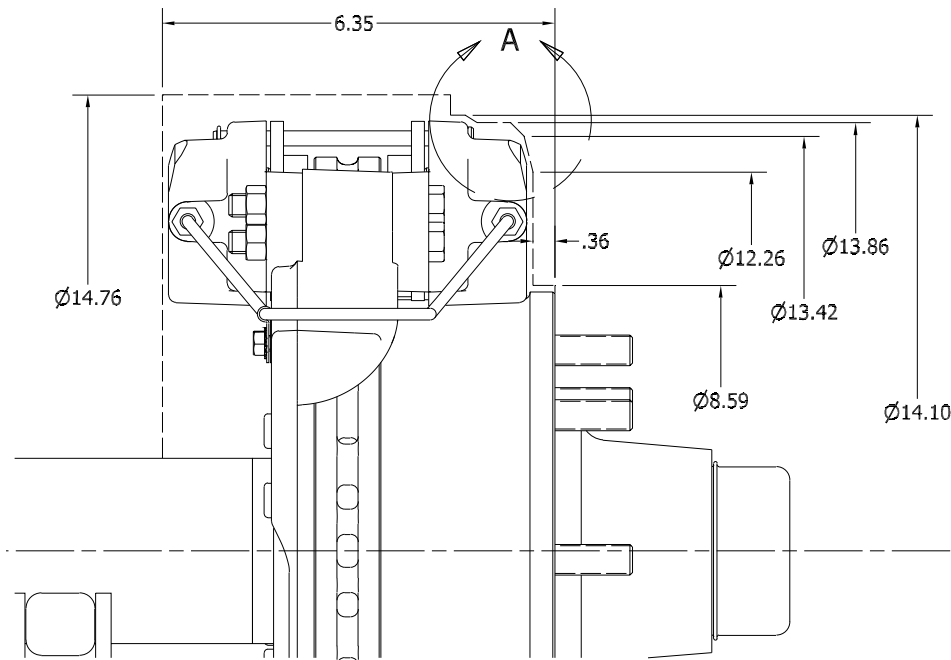
Actuation Options

Dexter Axle recommends using Dexter's DX Series E/H Actuator 1,600 psi, part number K71-651-00. Another option would be vacuum over hydraulic, or air over hydraulic actuation system capable of generating 1,600 psi maximum hydraulic pressure.

Performance

Dexter disc brakes provide 24,000 in-lbs. of brake torque output when tested using 1,600 psi of hydraulic input pressure, a 14.2" tire rolling radius (215/75R17.5), and 3,500 lbs. of wheel load.

7,000 Lb. Disc Brake Wheel Clearance Profile



CAUTION:

The above hub/rotor profile shows the minimum clearance needed to insure that no part of the wheel makes contact with any brake component.

Make sure the wheel is in full contact with the hub face and does not drag against the brake caliper. If there is not full contact with the hub face, you may experience a dangerous wheel separation.