



SURGE ACTUATORS AND COUPLERS



**TROUBLE-FREE
TOWING.**

HIGHLY ENGINEERED AND EASY TO USE

- » Corrosion-resistant rollers provide consistent sliding surfaces for smooth movement and superior load distribution
- » Linear stroke design provides uniform brake line pressure for improved stopping and reliable operation
- » All Dexter surge actuators are proudly assembled in America
- » Vigorously tested to ensure your trailer gets there safely
- » Tested and certified to SAE, AUS, NZS, or EUC requirements
- » ISO 9001:2015 Certified Production Environment

6,600 - 8,500 LBS. CAPACITY



» DX6.6 - 6,600 LBS.

Drop-N-Go™ coupler

Fits 2" or 50 mm hitch balls

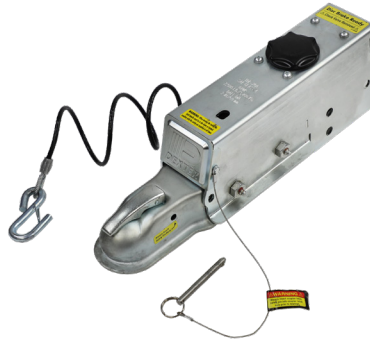
Aluminum master cylinder

Greaseable rollers

Integrated reverse solenoid on disc brake models

Bolt-on mounting

Zinc Plated



» DX7.5 - 7,500 LBS.

Drop-N-Go coupler

Fits 2" or 50 mm hitch balls

Aluminum master cylinder

Greaseable rollers

Integrated reverse solenoid on disc brake models

Bolt-on mounting

Zinc Plated or black powder coat



» DX7.5L - 7,500 LBS.

Low profile actuator and coupler latch

Fits 2" or 50 mm hitch balls

Aluminum master cylinder

Integrated reverse solenoid on disc brake version

Multiple mounting options

Zinc plated



» DX7.5L - 7,500 LBS.

Lower profile actuator

Lever-lock coupler latch

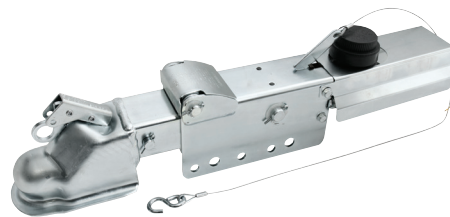
Fits 2" hitch balls

Aluminum master cylinder

Integrated reverse solenoid on disc brake version

Multiple mounting options

Zinc plated



» DX8.0 - 8,000 LBS.

Lever style breakaway

Drop, straight, and adjustable channel coupler mountings

Fits 2" hitch balls, lunette eye or clevis hitch

Greaseable rollers

Multiple mounting options

Zinc plated or primed



» DX8.5 - 8,500 LBS.

Drop-N-Go coupler

Fits 2" hitch balls

Aluminum master cylinder

Greaseable rollers

Integrated reverse solenoid on disc brake models

Bolt-on mounting

Zinc Plated

ALL COUPLERS AND SURGE ACTUATORS REQUIRE THE USE OF SAFETY PINS

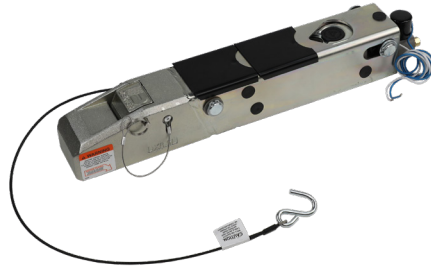
www.dexteraxle.com

8,500 - 20,000 LBS. CAPACITY



» DX8.5L - 8,500 LBS.

Low profile actuator
Drop-N-Go coupler
Fits 2" hitch balls
Aluminum master cylinder
Integrated reverse solenoid on disc brake version
Multiple mounting options
Zinc Plated



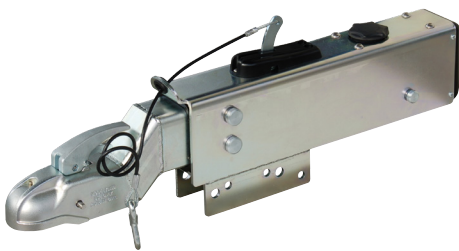
» DX8.5L - 8,500 LBS.

Low profile actuator
Drop-N-Go coupler
Fits 2-5/16" hitch balls
Aluminum master cylinder
Integrated reverse solenoid on disc brake version
Multiple mounting options
Zinc Plated



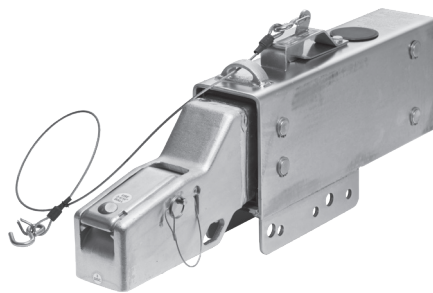
» DX12.5 - 12,500 LBS.

Drop, straight, and adjustable channel coupler mountings
Fits 2-5/16" hitch balls, lunette eye or clevis hitch
Lever style breakaway
Greaseable rollers
Multiple mounting options
Zinc Plated or primed



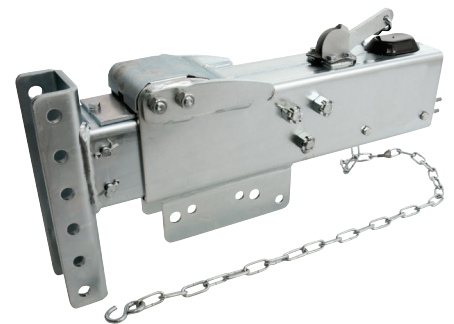
» DX16.5 - 16,500 LBS.

Lever style breakaway
Fits 2-5/16" hitch balls
Aluminum master cylinder
Integrated reverse solenoid on disc brake version
Multiple mounting options
Zinc Plated



» DX20 - 20,000 LBS.

Lever style breakaway
Fits 2-5/16" hitch balls, lunette eye or clevis hitch
Aluminum master cylinder
Integrated reverse solenoid on disc brake version
Multiple mounting options
Zinc Plated



» DX20EX - 20,000 LBS.

Drop, straight, and adjustable channel coupler mountings
Fits 2-5/16" hitch balls, lunette eye or clevis hitch
Lever style breakaway
Rugged top slide rollers for increased durability
Zinc Plated or primed

ALL COUPLERS AND SURGE ACTUATORS REQUIRE THE USE OF SAFETY PINS

www.dexteraxle.com

COUPLERS & SWING TONGUES



» 2" BOLT ON COUPLER
 Rated at 7,000 lbs.
 Drop-N-Go coupler
 Fits 2" or 50mm hitch balls
 Bolt-on Mounting
 Zinc Plated



» DX20C COUPLER
 Rated at 20,000 lbs.
 Drop-N-Go Coupler
 Fits 2-5/16" hitch balls
 Adjust trailer to match tow
 vehicle height
 Sleeker square nose design
 3 or 5 position channel mount



» LUNETTE EYE COUPLER
 Rated at 25,000 lbs.
 3" Eye
 Adjust trailer to match tow
 vehicle height
 Easy to use
 3 or 5 position channel mount
 Zinc or black E-Coat



» SWING TONGUES
 4" - 6" tongue options
 Save up to 2' of trailer storage
 space



E-Z SWING™
 SWING TONGUE COUPLER

SLEEK, IN-LINE WELD-ON
 SWING TONGUE OPTION



ALL COUPLERS AND SURGE ACTUATORS REQUIRE THE USE OF SAFETY PINS

www.dexteraxle.com

© 2018-2023 Dexter Axle Company | LIT-710-00 | 2023.08