



STANDARD NON-STEER HEAVY DUTY TRAILER AXLE SOLUTIONS



**BUILT TO
OUTPERFORM.**

CUSTOM SOLUTIONS FOR YOUR NEEDS

- » 15,000 - 45,000 lbs. capacities
- » Drum and air disc brake options
- » Multiple options for spindles and axle tube thickness in track lengths from 28" to 144"
- » Compatible with Dexter's ISS Air Ride suspensions

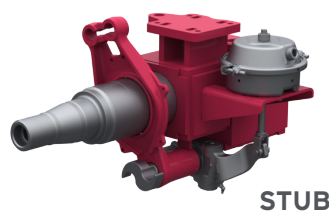
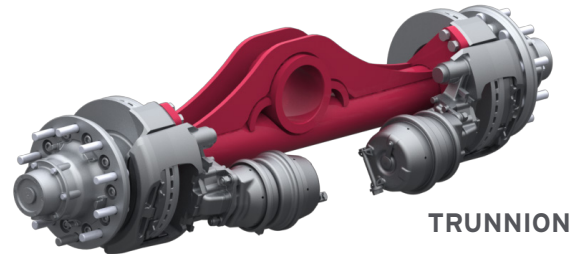
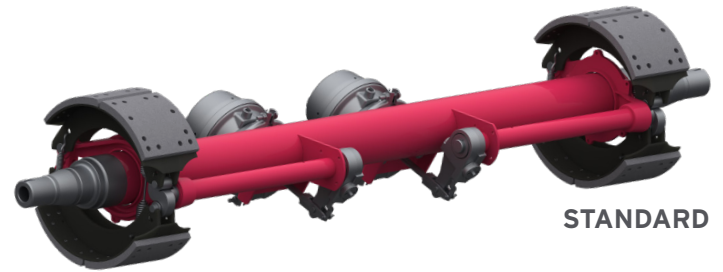
SUPPORT EVERY STEP OF THE WAY

- » Over 60 years of axle design and manufacturing experience
- » Engineering support to create custom configurations to match your specifications
- » Exceptional customer service and technical field support team to support you after purchase

THE ULTIMATE SELECTION

» RIGID NON-STEER

- Axle offerings that can serve a wide variety of applications and shown to withstand whatever the heavy duty industry can throw at it
- Lots of customization options are available to help you find the optimum solution for your heavy duty trailer requirements
- Large diameter tube upgrade on standard configuration for a lighter weight axle without a reduction in strength
- Short track axles for walking beam suspensions
- Trunnion axles for specialty hydraulic suspensions systems
- Stub axles for custom builds like conveyor systems and agriculture trailers



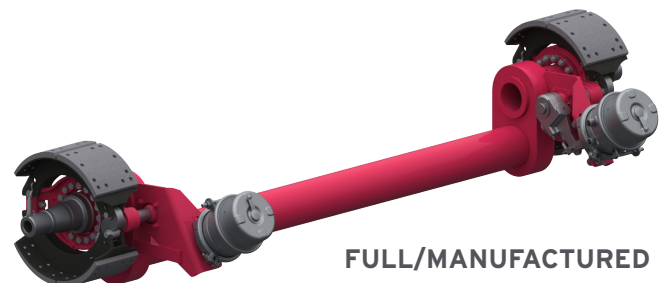
» DROP CENTER

- Provide clearance around product discharge tubes on tankers or drive shafts on truck applications
- Offered in 6" and 9" depths in either standard or inverted style orientation



» FULL DROP

- Opens up the center section of the trailer allowing for more trailer design opportunities
- Pair with a Dexter low-ride suspension and get an ultra low deck height
- Offered in 5" and 6" drops



INDUSTRY STANDARD SPINDLES

F22 SERIES - TAPERED

Bearing Cone Group: HM218248/HM212049

The F22 spindle has unsurpassed durability and is the most widely used in North America.



F24 SERIES - PARALLEL

Bearing Cone Group: HM518445/HM518445

Recognized world-wide for its larger bearing size and simplicity. The axle has a wide range of applications and is the preferred axle for heavy duty bulk tanker carriers.



F26 SERIES

Bearing Cone Group: 759/740

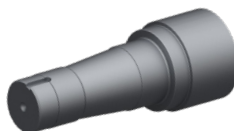
The first choice for both on-highway and off-highway extra heavy duty use. The durability of this series sets the standard throughout the North American logging and mining industries.



K45 SERIES

Bearing Cone Group: 787/6580

The perfect choice for extreme duty and heavy specialty hauling. This solid bar spindle is built to withstand the toughest applications in any environment.



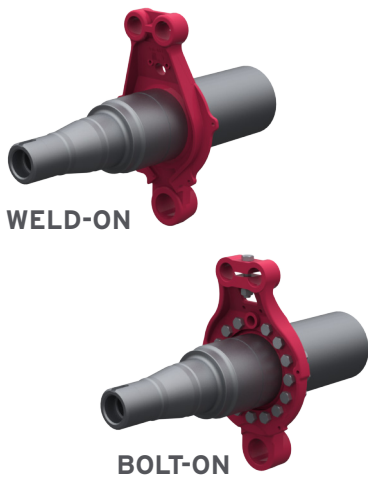
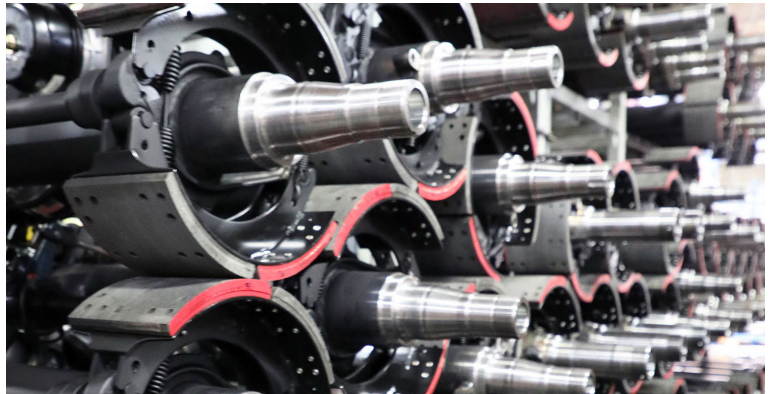
	CAPACITY	TUBE
F22	22,500 LBS. 10,227 KG.	S-WALL 5" OD
	25,000 LBS. 11,363 KG.	H-WALL 5" OD
	25,000 LBS. 11,363 KG.	T-WALL 5" OD
	25,000 LBS. 11,363 KG.	N-WALL 5-3/4" OD
F24	22,500 LBS. 10,227 KG.	S-WALL 5" OD
	25,000 LBS. 11,363 KG.	H-WALL 5" OD
	26,000 LBS. 11,818 KG.	T-WALL 5" OD
	26,000 LBS. 11,818 KG.	N-WALL 5-3/4" OD
F26	30,000 LBS. 13,636 KG.	S-WALL 5-3/4" OD
K45	45,000 LBS. 20,454 KG.	SOLID 5-3/4" OD



INDUSTRY STANDARD BRAKES

» DRUM BRAKES

- Bolt-on or weld-on brake spiders
- Wide variety of pre-certified linings for North America, Australia, and Europe
- Affordable heavy duty braking options with industry proven durability
- Superlife (SL) linings are standard where applicable for extended service life



BRAKES	LINING	CAPACITY		HUBS
		(LBS.)	(KGS.)	
12-1/4" X 7-1/2"	IMT23	20,000	9,071	8 X 275 mm 8 X 285 mm
15" X 8-5/8"	IMT23HD SL	22,500	10,205	8 X 285 mm 10 X 285 mm 10 X 335 mm
16-1/2" X 7"	IMT20	20,000	9,071	
	IMT23 SL	23,000	10,432	
	IMT25 SL	25,000	11,363	
16-1/2" X 8-5/8"	HALDEX 2020-1	22,500	10,205	
	IMT23 SL	22,500	10,205	

» AIR DISC BRAKES

- Better overall performance with less brake fade reduces downtime and cost
- Lightweight design provides shorter stopping distances & increased safety
- Multiple hub-rotor options in steel or aluminum



WHEEL	BRAND	CAPACITY	
		(LBS.)	(KGS.)
17.5"	WABCO PAN17	20,000	9,071
19.5"	WABCO PAN19-1		
22.5"	WABCO PAN22-1	23,000	10,432
	HALDEX MODULT		
	BENDIX ADB22X		
BENDIX ADB22X-LT			

www.dexteraxle.com

© 2023 Dexter Axle Company | LIT-429-00 | 2023.06