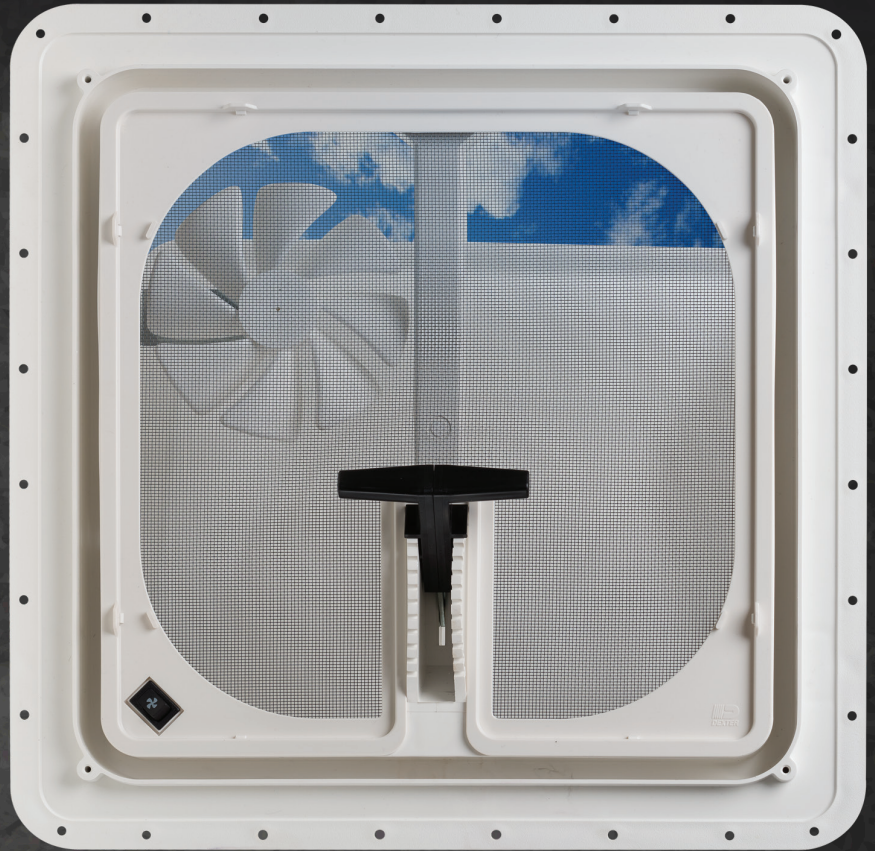




E-Z LIFT™ VENTADOME®

ADVANCED VENTILATION SOLUTIONS



Ergonomic lift handle

Full perimeter weather seal

Opens and closes quickly

Ten locking positions for secure travel

Built-in mounting flange for aftermarket covers



E-Z LIFT™ VENTADOME®
ADVANCED VENTILATION SOLUTIONS

E-Z LIFT™ VENTADOME®

DEXTER'S E-Z LIFT VENTADOME IS DESIGNED FOR FAST, EASY OPERATION. WITH ITS LARGE ERGONOMIC DESIGNED LIFT HANDLE, THE E-Z LIFT OPERATES EFFORTLESSLY.

The lift mechanism has no gears and has ten locking positions for secure travel. With a 1/4" thick mounting flange made from long lasting weather resistant specialty polymers, the E-Z Lift is safe to install on any RV roof and fits all existing 14-1/4" x 14-1/4" standard rough openings. The E-Z Lift also has a built-in mounting flange for aftermarket covers. Available in 12 volt, non-powered and Canadian list models.

AVAILABLE MODELS

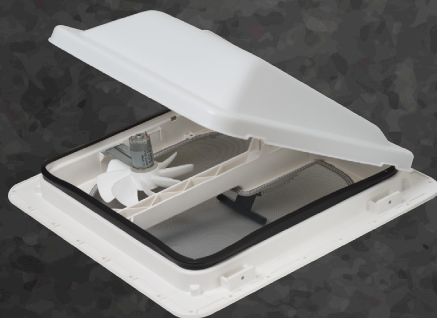
PART NUMBER	DESCRIPTION
V3094-601-00	12V Powered Roof Vent - White Dome, Plastic Flange, Polar White Screen Frame
V3094-603-00	12V Powered Roof Vent - Smoke Dome, Plastic Flange, Polar White Screen Frame
V3094-601-00C	12V Powered Roof Vent - White Dome, Plastic Flange, Polar White Screen Frame Canadian Listed
V3094-603-00C	12V Powered Roof Vent - Smoke Dome, Plastic Flange, Polar White Screen Frame Canadian Listed
V3092-603-00	Non-Powered Roof Vent - Smoke Dome, Plastic Flange, Polar White Screen Frame
V3092-601-00	Non-Powered Roof Vent - White Dome, Plastic Flange, Polar White Screen Frame

FEATURES

- Easy to use
- Ten locking positions for secure travel
- Opens and closes quickly
- No gears
- Ten times faster to operate
- Aerodynamic dome
- Upgraded full perimeter weather seal
- Standard colors: white or smoke
- Clean open view with hidden junction box for Canadian listed applications

SPECIFICATIONS

- 1/4" thick mounting flange made from long lasting, weather-resistant specialty polymers (used in residential applications)
- Safe to install - no sharp edges
- Works well with all roofing materials
- Built-in mounting flange for aftermarket covers
- UV resistant mounting flange
- Fits all existing 14-1/4" x 14-1/4" standard rough openings
- Available powered: part number V3094
Non-powered: part number V3092
Canadian listed: part number V3094C



E-Z LIFT™ VENTADOME®
ADVANCED VENTILATION SOLUTIONS

www.dexteraxle.com

Scan to view
dexteraxle.com

