



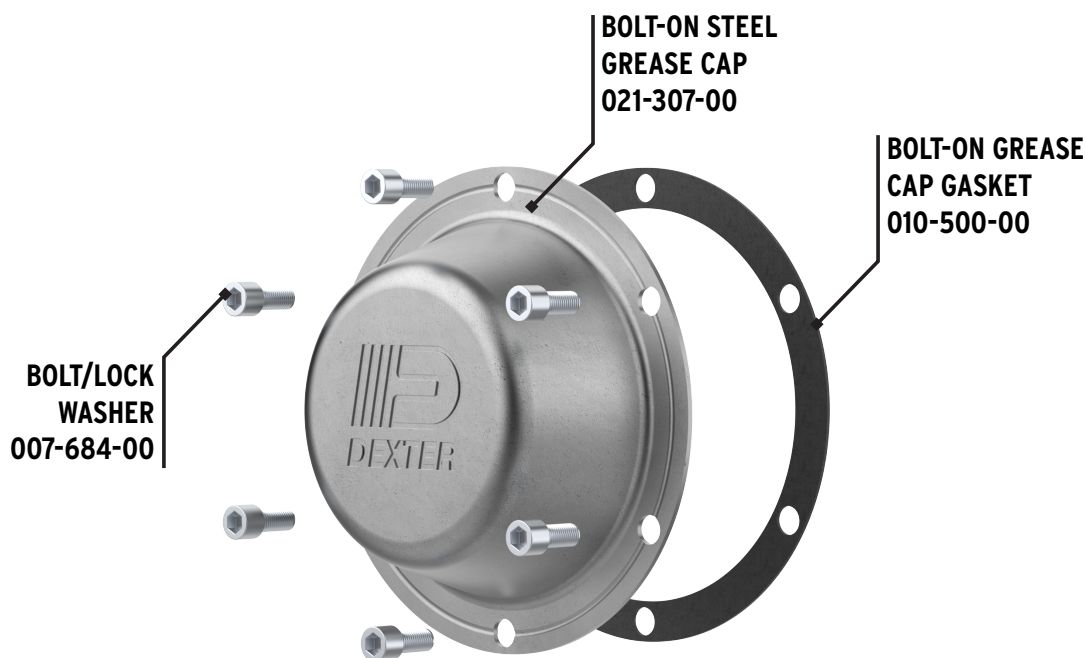
PRODUCT BULLETIN #514

NEW 9,000 LBS. - 12,000 LBS. BOLT-ON STEEL GREASE CAP

July 14, 2025

Dexter is excited to introduce a new Steel Grease Cap designed for bolt-on medium-duty grease applications with axle capacities between 9,000 lbs. and 12,000 lbs. This robust cap is crafted from 11-gauge stamped steel and features a corrosion-resistant Zinc coating, making it ideal for challenging environments.

PART NUMBER: K21-307-00



The Steel Grease Cap will be available on the following axle models and will be available to ship in June 2025.

AXLE CAPACITY	CAP STYLE	AXLE MODELS
9,000 - 12,000 LBS.	BOLT-ON GREASE	D90, D100G, D100, D120, #13G, #13D, #14, #14T

BOLT-ON STEEL GREASE CAP AFTERMARKET KIT:

Dexter will also offer the Stamped Steel Grease Cap as an aftermarket kit **K21-307-00**.



K21-307-00 KIT CONTENTS:

PART NUMBER	QTY	DESCRIPTION
021-307-00	1	STAMPED BOLT-ON STEEL GREASE CAP
010-500-00	1	BOLT-ON CAP GASKET
007-684-00	6	BOLT/LOCK WASHER

Axles produced after October 2023 come with an updated 9,000 - 12,000 lb. hub series designed for a bolt-on style. Please be aware that aftermarket bolt-on grease caps are NOT compatible with legacy thread-in hubs and will ONLY fit Dexter hubs with a bolt-on design.

For questions or additional information, please visit www.dexteraxle.com or contact your Dexter Account Manager.

Matt Brady
Product Manager